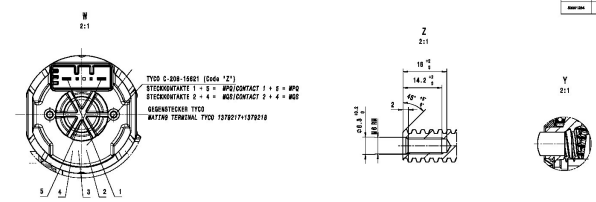


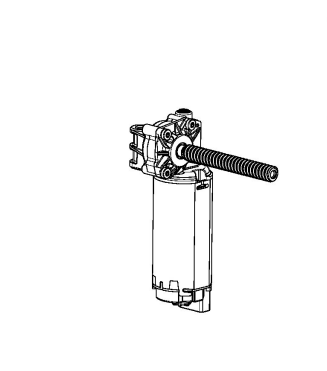
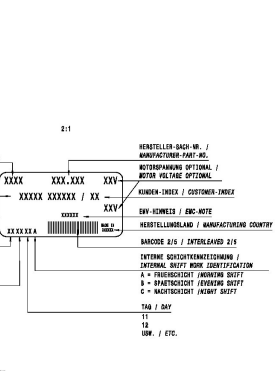
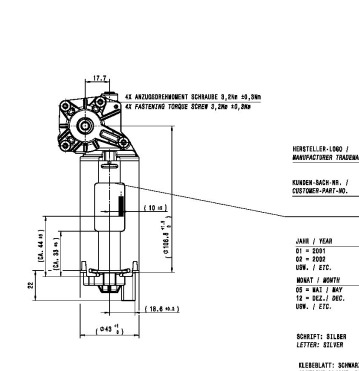
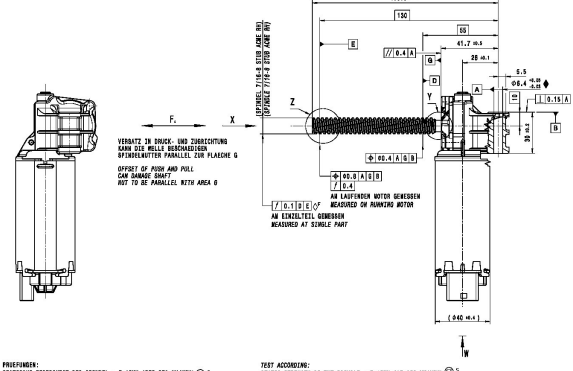
DRAWING AND RELEASE ACCORDING TO IEC-7-7.1 AND HAS SUPPLIER MANUAL

SYMBOL	CHARACTERISTIC	QUANTITY
SC	1	1
FC	2	2

TYP/TYPE	7-1/16-4 STUB AXIAL SH	MM	INCHES
BEZUGSMESSART / TYPE OF DIMENSION		RECHTS / RIGHTS	RIGHT HAND
DANZUNGE / NUMBER OF STARTS			
KOPFKREIS-Ø / MINOR DIA	11.384 ^{±0.015}		.450 / .453
FÜHRKREIS-Ø / MINOR DIA	8.850 ^{±0.015}		.348 / .352
TEILKREIS-Ø / PILOT DIA	10.312		.405
TEILUNG / AXIAL PITCH	P	3.175	.125
LEITUNGSWINKEL / PRESSURE ANGLE		30°	
STRECKENSTRECKEN / PITCH ERROR MAX		0.01	0.0009
LEITUNGSLEITER / PITCH DIA OVER			
MESSLEITER / Ø DIA WIRES		Ø 0.127 ± 0.008	.005 / .497
Ø 0.812 ± 0.01			



REV. NO.	ZUST.	DESCRIPTION	DATUM	NAM



PROFILIERT:
 STATISTISCHES PROFILOBER DER SPINDEL: P=150A (BET 250 MIKRON) Ⓢ

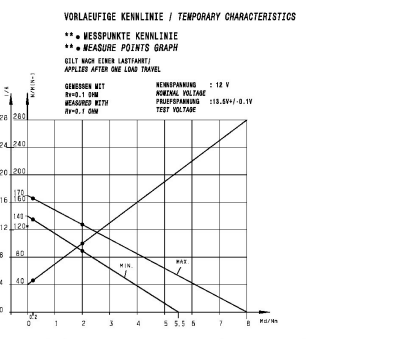
TEST ACCORDING:
 STATISCHES STERKEN DER SPINDEL: P=150A (BET 250 MIKRON) Ⓢ

WISSE:
 AEROMARE NOISE TEST: 12420A

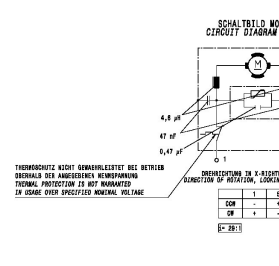
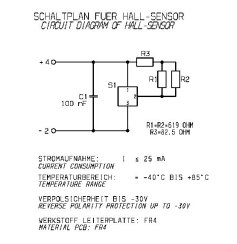
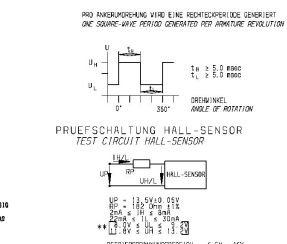
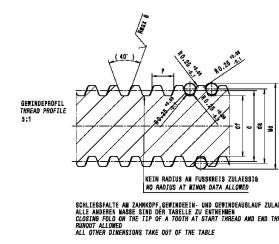
BEACHTEN:
 LEISTUNGSPERFORMANCE/SCHWELLEN: <200A

DRIFT / WECHSELKREIS / MAX. AXIAL PLAY OF THE SPINDLE	WEG / DISTANCE / 0.00	WINKEL / ANGLE / 0.05	WERT / VALUE / 0.2
1.5 N	0.00	0.05	
1.250 N	0.00	0.2	

SCHNEIDER BEACHTEN BEI DER ANFORDERUNG:
 NENNEN SIE DEN BEWERTUNGSPUNKT UND DEN KUNDEN DURCH PRÄFABRIKATION IN DER SYSTEMSICHERSTELLUNG.



ITEM	MATERIAL NUMBER	QTY	TITLE	DOCUMENT NO.



PRUEFSCHALTUNG HALL-SENSOR / TEST CIRCUIT HALL-SENSOR

U_H = 12.0V ± 0.5V DC
 U_L = 2.0V ± 0.2V
 R_L = 100Ω ± 5%

SCHLIESSFÄHIGKEIT UND ZUSAMMENBAU-ZULASSUNG
 ALL THREADS MUST BE TO FULFILL THE REQUIREMENTS

KONTAKTEINWAND / CONTACT THICKNESS
 0.1 ± 0.02 mm

LEISTUNGSPERFORMANCE / PERFORMANCE
 1.0 N

REV. NO.	ZUST.	DESCRIPTION	DATUM	NAM

NO.	REV. NO.	ZUST.	DESCRIPTION	DATUM	NAM
405-007-90-99	1.1	1	1	1	1

REV. NO.	ZUST.	DESCRIPTION	DATUM	NAM